

362A014-114

30° angled side breakout thin wall transition heat-shrinkable shapes

Applications

Used for mechanical protection and cable strain relief. Ideal for cable harness applications where cable branches and breakouts are required.

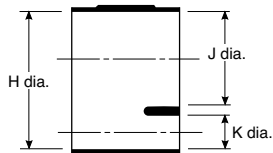
Materials available

- 3 Semi-rigid modified Polyolefin.
- 4 Flexible modified Polyolefin.
- 12 Modified Fluoro-elastomer.
- 25 Fluid resistant modified Elastomer.
- 100 Low fire hazard material.

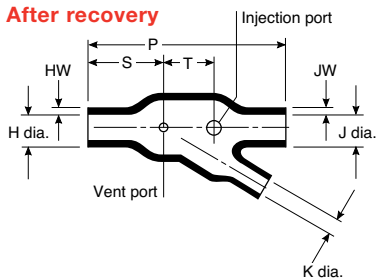
Coatings available

- 3 & -4 /42 General purpose hot melt adhesive.
- /86 High performance hot melt adhesive.
- 25 /42 General purpose hot melt adhesive.
- /86 High performance hot melt adhesive.
- /225 Pre-coated high temperature curing adhesive.
- 100 /86 High performance hot melt adhesive.
- CS1972 Adhesive tape

A) As supplied



B) After recovery



Dimensions (all dimensions are in mm)

Part Number	A) Dimensions as supplied (min)			B) Dimensions after heating recovery (max)								Weight
	H	J	K	H	J	K	P ±10%	S ±10%	T ±10%	HW/JW ±10%		
362A014	30.5	30.5	20.3	15.7	15.7	10.7	82.6	31.8	21.1	2.54	20.4g	
362A024	35.6	35.6	15.2	18.3	18.3	8.6	63.5	19.1	22.4	2.54	13.3g	
362A114	35.6	35.6	10.2	18.8	18.8	5.3	61.0	19.1	21.3	2.79	13.2g	

Ordering Information

- Standard colour: 0 = Black.
- Size selection: To determine the size of the required moulded part, please refer to table.
- Standard packaging: Moulded parts are individually packaged.
- Ordering description: Specify the product name, size, material and coating required.
- Ordering Example: To fit a 20mm cable O/d and 10mm O/d breakout using -12 material in black = **362A024-12-0**.

Note: For a detailed description on how to construct your moulded part, please refer to the Moulded Parts Numbering Guide.