

WIRE & CABLE

ASN-E

Airframe wire and cable

1 Applications

Effective cables for challenging and hazardous environments. Used predominantly throughout the aerospace industry. Additional applications include communications, automotive, mass transit, defence/marine, oil, gas and petrochemical plants.

Features & Benefits

- Low weight/volume
- Resistance to oils and solvents
- High and low temperature capabilities
- Excellent fire resistance
- Low smoke and fume properties
- Excellent physical performance and aging properties

Operating Temperature

- ASN-E 0261/0260 = -55°C to +200°C
- ASN-E 0262 to 0275 = -55°C to +260°C

Voltage Rating

- 600 volts rms at 2000Hz

Specifications/Approvals

Single Core

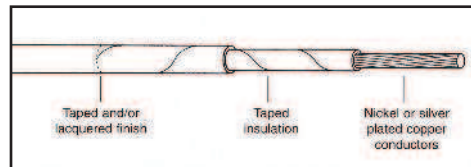
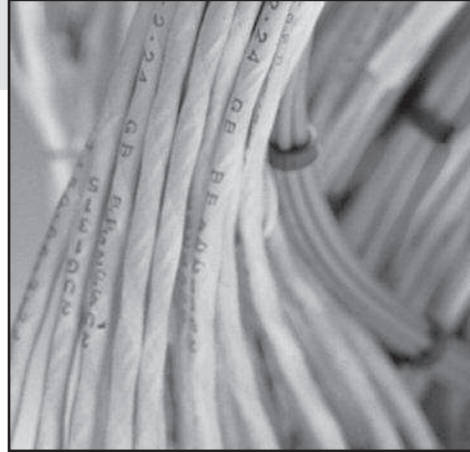
- ASN-E 0260 Type BF
- ASN-E 0261 Type CF
- ASN-E 0262 Type DK

Twisted Single Cores

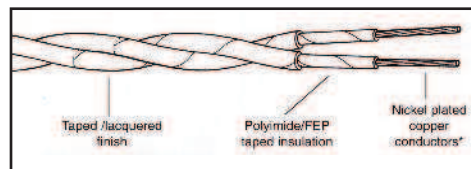
- ASN-E 0264 Type PF
- ASN-E 0266 Type QF
- ASN-E 0268 Type RF
- ASN-E 0265 Type PG
- ASN-E 0267 Type QG
- ASN-E 0269 Type RH

Screened and Jacketed

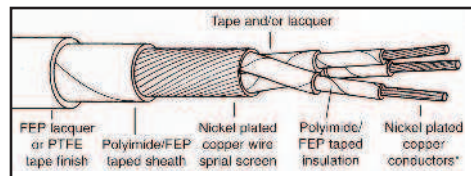
- ASN-E 0270 Type SJ
- ASN-E 0272 Type TK
- ASN-E 0274 Type UD
- ASN-E 0271 Type ST
- ASN-E 0273 Type TT
- ASN-E 0275 Type UE



Single Core



Twisted Single Cores



Screened & Jacketed

Note: For further information, technical data or assistance with your specific ASN-E wire and cable requirements, please contact us.

WIRE & CABLE

ASN-E

Airframe wire and cable

Single Core

1

Part Number	Wire Type	Description	Gauge Size AWG	Weight kg/km	Colours
ASN-E 0260	BF	PTFE taped insulated primary wire	18 - 26	11.52 - 2.9	22 = Light green 20 = Light blue All other sizes white
ASN-E 0261	CF	Polyamide/FEP tape insulated primary wire with FEP lacquer	10 - 26	48.3 - 2.0	22 = Light green All other sizes white
ASN-E 0262	DK	Polyamide/FEP tape and PTFE taped insulated primary wire	6 - 26	143 - 2.8	22 = Light green All other sizes white

Twisted Single Cores

Part Number	Wire Type	Description	Gauge Size AWG	Weight kg/km	Colours
ASN-E 0264	PF	2-Core light weight cable using 2 ASN-E 0261(CF) primary wires	10 - 26	99.5 - 4.12	Red & Blue for all gauge sizes
ASN-E 0266	QF	3-Core light weight cable using 3 ASN-E 0261(CF) primary wires	10 - 26	149.25 - 6.2	Red, Blue & Yellow for all gauge sizes
ASN-E 0268	RF	4-Core light weight cable using 4 ASN-E 0261(CF) primary wires	10 - 26	199 - 8.24	Red, Blue, Yellow & Green for all gauge sizes
ASN-E 0265	PG	2-Core medium weight cable using 2 ASN-E 0262(DK) primary wires	6 - 26	294.6 - 5.8	Red & Blue for all gauge sizes
ASN-E 0267	QG	3-Core medium weight cable using 3 ASN-E 0262(DK) primary wires	6 - 26	441.9 - 8.65	Red, Blue & Yellow for all gauge sizes
ASN-E 0269	RH	4-Core medium weight cable using 4 ASN-E 0262(DK) primary wires	6 - 26	589.2 - 11.54	Red, Blue, Yellow & Green for all gauge sizes

Screened and Jacketed*

Part Number	Wire Type	Description	Gauge Size AWG	Weight kg/km	Colours
ASN-E 0270	SJ	1-Core light weight cable using an ASN-E 0261(CF) primary wire	14 - 26	24.8 - 4.3	22 = Light green All other sizes white
ASN-E 0272	TK	2-Core light weight cable using 2 ASN-E 0261(CF) primary wires	12 - 26	75 - 7.6	Red & Blue for all gauge sizes
ASN-E 0274	UD	3-Core light weight cable using 3 ASN-E 0261(CF) primary wires	14 - 26	72.6 - 10.5	Red, Blue & Yellow for all gauge sizes
ASN-E 0271	ST	1-Core medium weight cable using an ASN-E 0262(DK) primary wire	16 - 26	23.8 - 6	22 = Light green All other sizes white
ASN-E 0273	TT	2-Core medium weight cable using 2 ASN-E 0262(DK) primary wires	14 - 26	61.7 - 11	Red & Blue for all gauge sizes
ASN-E 0275	UE	3-Core medium weight cable using 3 ASN-E 0262(DK) primary wires	16 - 26	67.5 - 14.6	Red, Blue & Yellow for all gauge sizes

*Note: Jacket colours: Size 24, 20, 16 = Light Blue, all other sizes = White